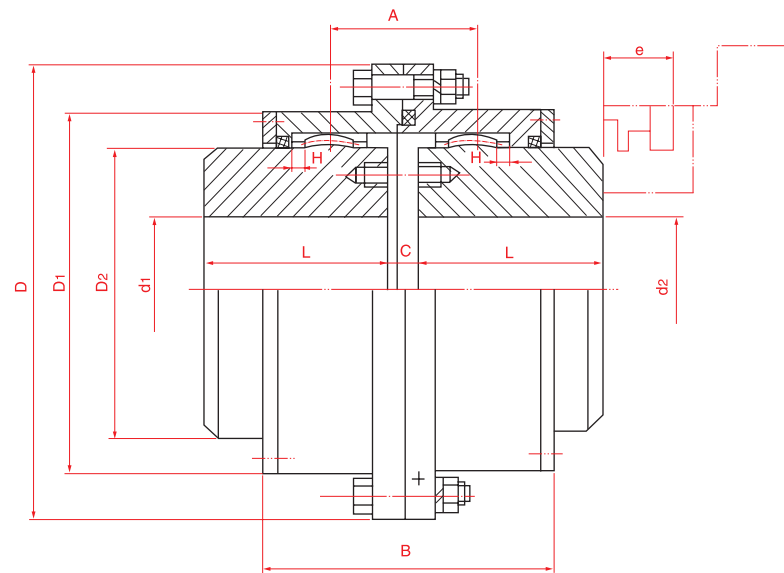
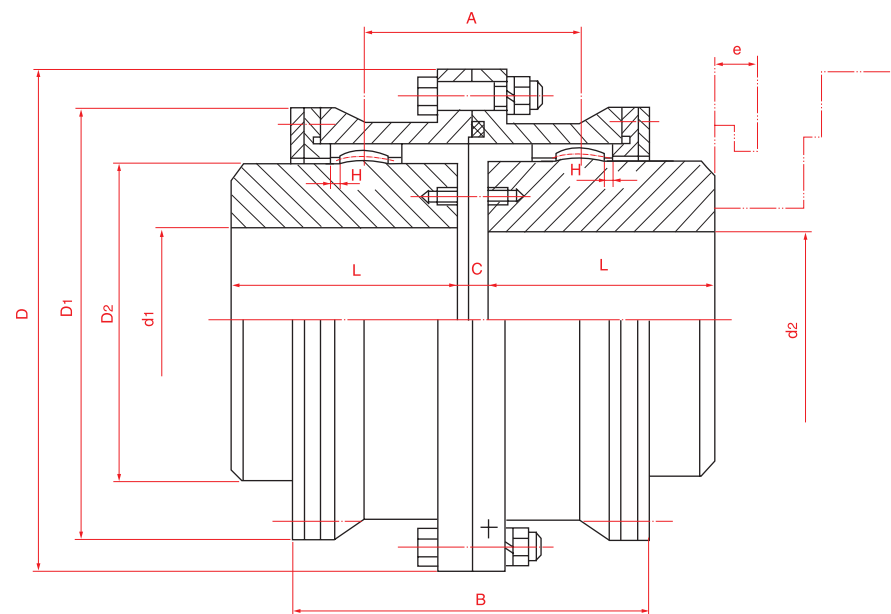


## GIICL Drum Gear Coupling



Model G II CL1~G II CL13



Model G II CL14~G II CL25

<http://www.timothyholding.com/>

## GIICL Drum Gear Coupling

### Parameters and Specifications of Couplings Model G II CL

Model	Nominal Angular force Tn kN • m	Allowable Speed [n] r/min	Axle Hole Dia. d1,d2	Axle Hole Length L	D	D1	D2	C	H	A	B	e	Grease Volume ml	Weight kg	Rotary Inertia kg • m <sup>2</sup>
GIICL1	0.355	4000	16~35	38~60	103	71	50	8	2	36	76	38	51	5.1	0.015
GIICL2	0.63	4000	20~45	44~112	115	83	60	8	2	42	88	42	70	6.2	0.027
GIICL3	1.0	4000	22~55	44~112	127	95	75	8	2	44	90	42	78	8.6	0.045
GIICL4	1.6	4000	38~65	82~142	149	116	90	8	2	49	98	42	87	14.5	0.098
GIICL5	2.8	4000	40~75	84~142	167	134	105	10	2.5	55	108	42	125	19.6	0.173
GIICL6	4.5	4000	45~90	84~172	187	153	125	10	2.5	56	110	42	148	31.2	0.337
GIICL7	6.3	3750	50~105	84~212	204	170	140	10	2.5	60	118	42	175	47.5	0.602
GIICL8	9.0	3300	55~115	84~212	230	186	155	12	3	67	142	47	268	60.2	0.964
GIICL9	14	3000	60~135	107~252	256	212	180	12	3	69	146	47	310	95.8	1.878
GIICL10	20	2650	65~150	107~252	287	239	200	14	3.5	78	164	47	472	119	2.981
GIICL11	31.5	2350	70~175	107~302	325	276	235	14	3.5	81	170	47	550	189	6.35
GIICL12	45	2100	75~200	107~352	362	313	270	16	4	89	190	49	695	285	12.22
GIICL13	63	1850	150~225	202~352	412	350	300	18	4.5	98	208	49	1019	360	19.67
GIICL14	100	1650	170~250	242~410	462	420	335	22	5.5	172	296	63	3900	544	38.9
GIICL15	160	1500	190~285	282~470	512	470	380	22	5.5	182	316	63	4000	786	69.8
GIICL16	224	1300	220~320	282~470	580	522	430	28	7	209	354	67	4500	1027	116.4
GIICL17	315	1200	250~365	330~550	644	582	490	28	7	198	364	67	4900	1532	214.9
GIICL18	450	1050	280~400	380~650	726	658	540	28	8	222	430	75	7000	2278	398
GIICL19	630	950	300~470	380~650	818	748	630	32	8	232	440	75	8900	3026	702
GIICL20	900	800	360~540	450~800	928	838	720	32	10.5	247	470	75	11000	4430	1443
GIICL21	1250	750	400~600	540~800	1022	928	810	40	11.5	255	490	75	13000	6152	2246
GIICL22	1600	650	450~680	540~900	1134	1036	915	40	13	262	510	75	16000	7738	3619
GIICL23	2240	600	530~770	680~900	1282	1178	1030	50	14.5	299	580	80	28000	11553	6900
GIICL24	3150	550	560~850	680~1000	1428	1322	1175	50	16.5	317	610	80	33000	16615	12527
GIICL25	4000	460	670~1040	780~1100	1644	1538	1390	50	19	325	620	80	43000	27797	28793

Note: 1. Diameters and lengths may be decided as per customers' requirements.  
2. "e" is the required dimension for seal changing.

<http://www.timothyholding.com/>